

S

D

R

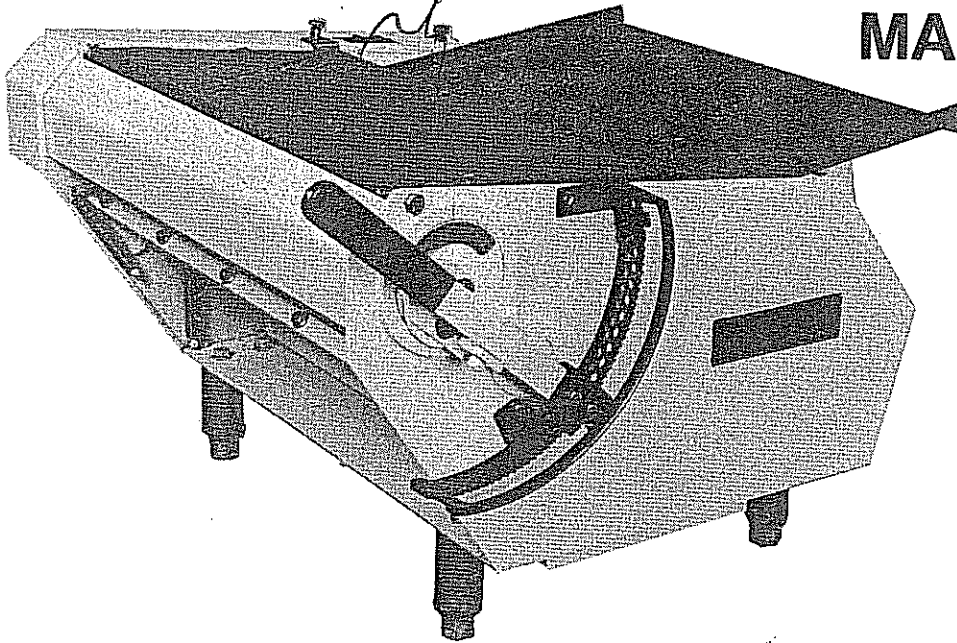
■

4

CUTAP BROWN TABLE
+ PAUL IS 1 1/4"
ROLLER WIDEST SETTING
IS 1"

ANETS
FOOD PREPARATION SYSTEMS

SDR-4 USE AND OPERATION MANUAL



WARNING:

DO NOT ATTEMPT TO CLEAN OR SERVICE MACHINE WITHOUT SETTING POWER SWITCH TO "OFF" POSITION AND UNPLUGGING ELECTRICAL POWER SUPPLY. KEEP HAND AND FINGERS AWAY FROM ROLLER AREA WHILE OPERATING OR SERVICING MACHINE. NEVER OPERATE MACHINE WITHOUT GUARDS IN PLACE. IF, FOR ANY REASON MACHINE CONTINUES TO "RUN" WITH SAFETY GUARDS REMOVED, DEPRESS "OFF" SWITCH AND DISCONNECT ELECTRICAL POWER SUPPLY. IMMEDIATELY CALL A QUALIFIED SERVICE REPRESENTATIVE BEFORE ATTEMPTING TO AGAIN OPERATE MACHINE.

Anetsberger Brothers, Inc., Northbrook, Illinois, certifies that all equipment of its manufacture is, to the best of their knowledge, free from defective material and workmanship.

Anetsberger Brothers, Inc., warrants to the original Buyer that the equipment, except that which is manufactured and warranted by others, shall be free of defects in workmanship or materials, provided that the Anetsberger Brothers, Inc., sole obligation under this warranty shall consist exclusively of repairing or replacing, free of charge, f.o.b. its factory, any parts received prepaid at its factory within one year from the date of the part's delivery to Buyer and determined by Anetsberger Brothers, Inc., upon inspection to be defective. NO OTHER WARRANTY, EXPRESSED OR IMPLIED, AS TO DESCRIPTION, QUALITY, MERCHANTABILITY, FITNESS FOR A PARTICULAR PURPOSE, OR ANY OTHER MATTER IS GIVEN BY ANETSBERGER BROTHERS, INC., IN CONNECTION HERewith. UNDER NO CIRCUMSTANCES SHALL ANETSBERGER BROTHERS, INC., BE LIABLE FOR LOSS OF PROFITS OR ANY OTHER DIRECT OR INDIRECT COSTS, EXPENSES, LOSSES OR DAMAGES ARISING OUT OF DEFECTS IN OR FAILURE OF THE EQUIPMENT OR ANY PART THEREOF. Anetsberger Brothers, Inc., obligation under its warranty shall be nullified unless Buyer provides proper maintenance of the equipment, if the equipment is used for any purpose other than intended or if the equipment is moved from the location where originally installed.

Anetsberger Brothers, Inc., equipment is designed and built to be compatible with a high level of safety and health standards commensurate with pricing and intended for other than household use. It is Anetsberger Brothers, Inc., expectation that its equipment installed, operated and maintained properly will enable the owner to comply with the regulations and interpretations of federal, state or local governmental authority or industry health and safety standards. Anetsberger Brothers, Inc., however, makes no representation or warranty that its equipment meets all the requirements of said standards because of the present vagueness in the requirements and the varied interpretations thereof. Equipment can only be shipped on this understanding. Where possible, Anetsberger Brothers, Inc., at the Buyer's specific request will modify its equipment at prices then in effect. Warranties, modifications, changes or defects relating to said equipment shall be subject to above warranty and this paragraph. It shall be the Buyer's responsibility to determine that all safety devices and controls are in the proper location and in operating order at all times, and to instruct the operating personnel in their operation and in the safe operation of the delivered equipment, and to maintain them after delivery.

Anetsberger Brothers, Inc., may at its sole discretion, and upon written application of Buyer, pay for all or part of the cost of installing any of the aforesaid parts replaced under this warranty.

1. Remove unit from crate; also all pieces of loose packing material and accessories.
2. Your Dough Roller is bolted to the shipping skid. Remove shipping bolts from skid and remove machine.
3. Check to make sure power switch is in the "OFF" position.
4. Install 4" sanitary legs (provided in separate package) to bottom of machine being careful not to lay machine on either side to prevent damage to controls.
5. Place machine in desired work area.
6. Level machine with 4" adjustable sanitary legs. DO NOT CONNECT TO ELECTRICAL SUPPLY AT THIS TIME. Loosen interlock knob (located near power switch) to release guard and flour tray for roller access. Remove scraper blades.
7. Remove protective paper from rollers.
8. Clean machine thoroughly avoiding the use of water in the roller area to prevent rust and pitting of rollers. Rollers may be treated with a light vegetable oil.

CAUTION: DON'T USE ANY ABRASIVE OR CAUSTIC CLEANERS OR PADS ON THE UNIT.

OPERATING INSTRUCTIONS

NOTE: BE SURE ALL SAFETY GUARDS ARE SECURELY IN PLACE BEFORE PLUGGING UNIT INTO ELECTRICAL SUPPLY!

1. Plug unit into a 3 wire grounded 120V outlet.
2. Turn machine "ON".
3. Set "Quick-Set" handle for desired dough thickness.
4. Your machine is now ready to operate.

NOTE: IF MACHINE DOES NOT RUN, TIGHTEN THE TWO (2) SAFETY INTERLOCK KNOBS LOCATED NEAR THE POWER SWITCH.

ROLLING DOUGH

1. Your SDR-4-FL Dough Roller is equipped with two (2) dough stops which may be used if desired for setting up a two-pass dough operation.
2. To set dough stops, set first pass at desired roller setting. Locate stop as photo illustrates using standard slot type screwdriver. Tighten stop. Set second pass in the same manner.
3. Set "Quick-Set" handle to first stop (thicker setting) Refer to picture.
4. Drop dough ball into safety hopper (See picture).
Dough exits at front of machine into operators hands. (See picture).
5. Re-set "Quick-Set" handle to second pass (thinner setting).
6. Turn dough 90° (wide-way) and drop into dough hopper.
7. Dough exits round and at desired thickness ready for dressing.

DAILY MAINTENANCE

1. Unplug your SDR-4-FL Dough Roller. Loosen interlock knob (located near power switch) to release guard and dough chute for roller access.
2. Carefully remove scraper blades and clean.
3. Wipe down rollers and machine with a dry cloth. (NEVER USE WATER).
4. Wipe rollers with lightly oiled (vegetable oil) cloth.
5. Re-insert scraper blades.
6. Reposition dough chute and guard. Tighten down interlock knobs.

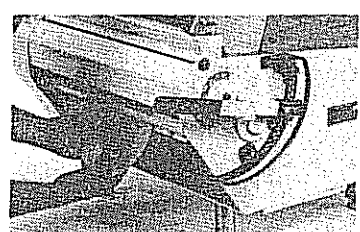
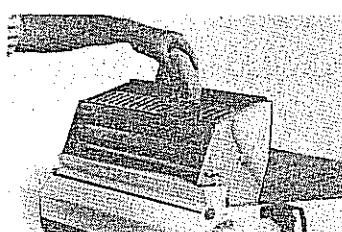
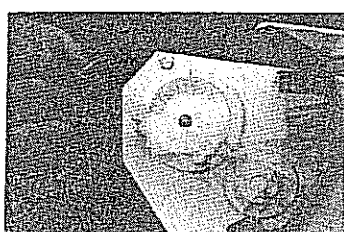
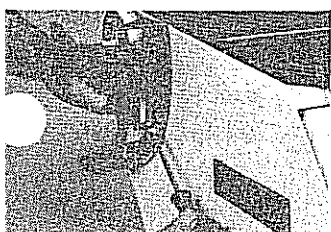
CHAIN: OIL ANNUALLY, COMMON 3IN1 OIL

MOBIL 47F30 SYNTHETIC **SPEED REDUCER**

This speed reducer contained the proper amount of AGMA lubricant No. 8 compound when it left from the factory. Replace after 30 days operation with the same kind of NEW oil, or equal. Afterwards, oil should be changed about every six months.

CAUTION: NEVER completely fill any reducer with oil. It will cause oil leakage and over-heating which results in rapid wear of oil, seals, bearings and gears. The oil should be on level with the oil-level plug, never any higher.

CAUTION: DO NOT CLEAN EQUIPMENT WHILE CONNECTED TO ELECTRICAL SUPPLY!



3.

4.

5.

ANETSBERGER BROTHERS, INC.

200 N. ANETS DRIVE.,

NORTHBROOK, IL 60062

Form No. I-25

Printed in U.S.A. 2/15/83

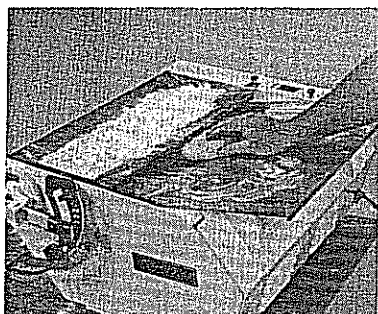
ANETS
Your food depends on it

SDR-4 SIDE OPERATED DOUGH ROLLER

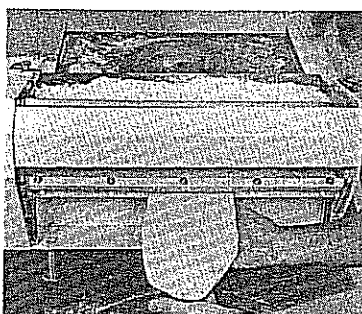
- 20" ROLLERS
- QUICK SET ROLLER ADJUSTMENT
- 1/2 H.P. MOTOR



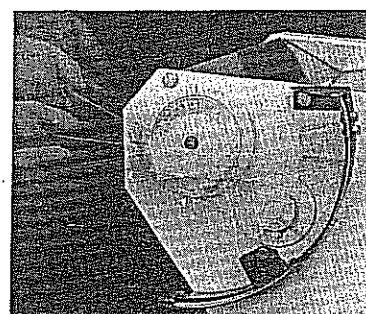
side operation



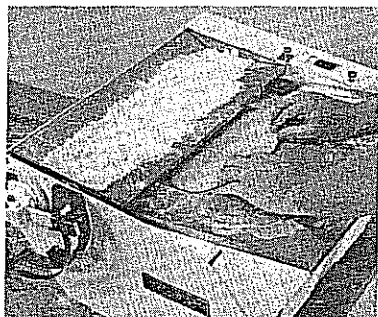
Set handle for first pass, load dough ball at top of infeed tray for first pass.



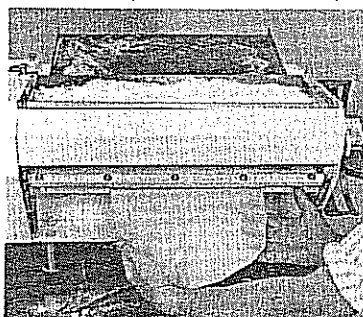
At completion of first pass, dough piece exits in an elongated shape at left of machine.



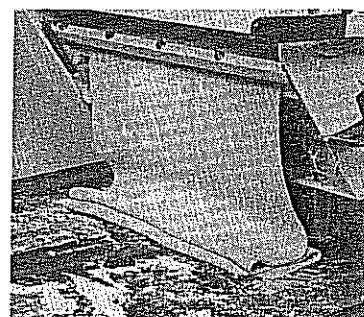
Flip the quick set handle to the desired final second pass setting.



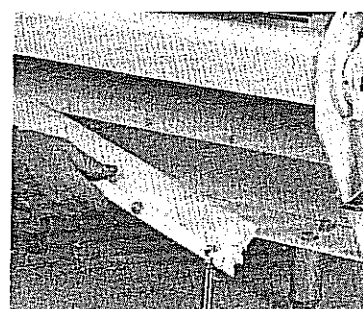
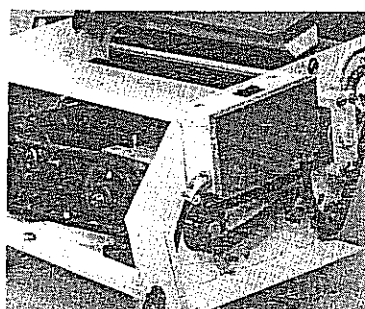
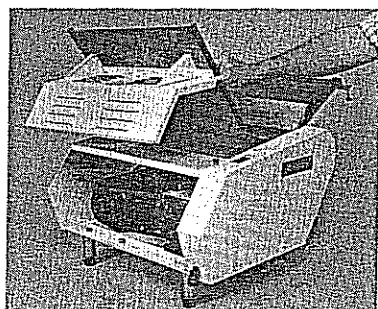
Turn dough piece 90° and load "width-wise" at top infeed tray for final second pass.



Dough piece exits at left of machine, round and at desired thickness... ready for dressing.



For rectangular shapes, set roller control at desired open position. Load and repeat; adjusting calibrations to thinner settings with quick-set handle. (Pictured: 18" x 26" dough sheet.)



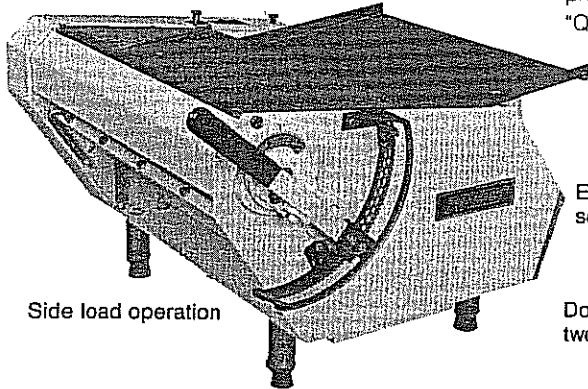
Hinged flour tray conveniently lifts up and folds back out of the way, exposing the rollers for cleaning, also exposing motor, belt, etc. Spring loaded scrapers remove quick and easy. Synthetic rollers minimize dough adhesion, require less flour dusting, and reduce dough build up. Also available with metal rollers, when the durability of metal is preferred.

SDR-4 DOUGH ROLLER SDR-4FL DOUGH ROLLER

Welded steel construction

Flour pan pivots for ease of cleaning

On/off switch protected from flour with clear rubber boot



Side load operation

Low profile design

Non-skid sound suppressors supplied

Meets OSHA Requirements

Safety interlocks automatically and immediately shut off machine when any panel is removed or opened for servicing or cleaning

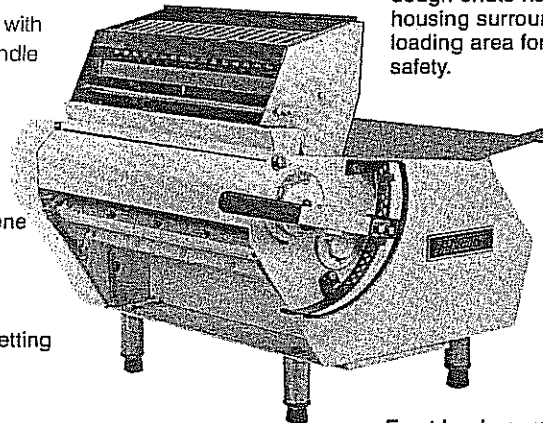
2 large 20" indexed, new precision machined rollers with "Quick-Set" adjustment handle

Easy to remove polyethylene scrapers

Dough stops allow for presetting two-pass operation

Jam-proof design, pusher bar built-in for use in the rare event of sticky dough.

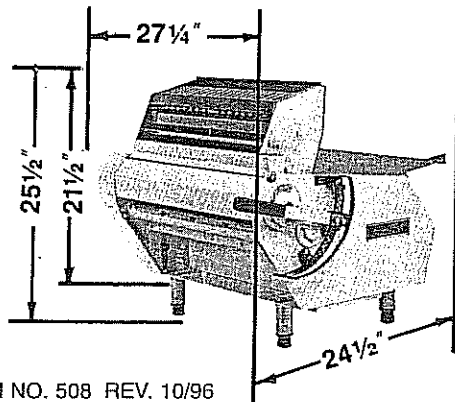
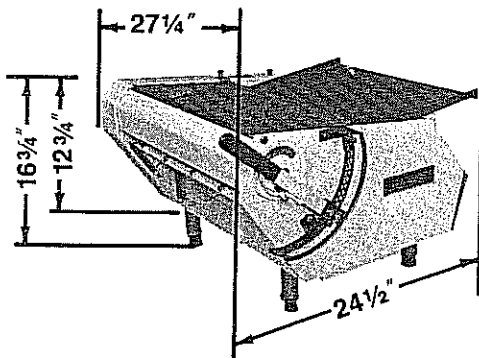
Stainless steel and aluminum dough chute has protective housing surrounding dough loading area for complete safety.



Front load operation

Rugged 1/2 HP motor with speed reducer.

CONSTRUCTION FEATURES AND SPECIFICATIONS



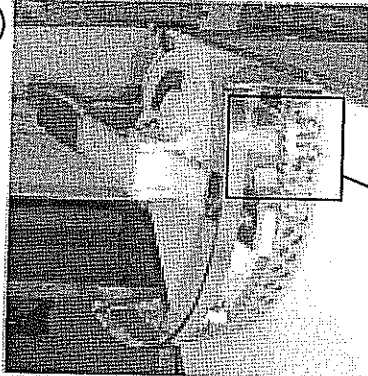
	SDR-4	SDR-4FL
Roller Size:	3 1/2" Dia. x 20" Lg.	3 1/2" Dia. x 20" Lg.
Roller Material:	Synthetic or Metal	Synthetic or Metal
Motor H.P.:	1/2 Standard	1/2 Standard
Finish:	White Powder Coating	White Powder Coating
Dough Chute:	—	Stainless Steel and Aluminum
Infeed Pan and Guard:	Stainless Steel	Stainless Steel and Aluminum
Flour Pan:	Stainless Steel	—
Stop/Start Switch:	Heavy Duty Type	Heavy Duty Type
Ball Bearings:	Sealed	Sealed
Voltage:	115V - 60 HZ Single Phase	115V - 60 HZ Single Phase
Amp:	7	7
Roller Speed:	57 FPM	57 FPM
Legs:	4" Sanitary Adjust.	4" Sanitary Adjust.
6 Foot 3 Wire Cord and Plug	Standard	Standard

Because of our continuous program of product improvement, Anetsberger Brothers, Inc. reserves the right to change models and specifications without notice.

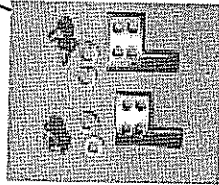


ANETS SDR-4/SDR-4FL DOUGH ROLLER INSTRUCTIONS FOR SETTING THE STOPS

1

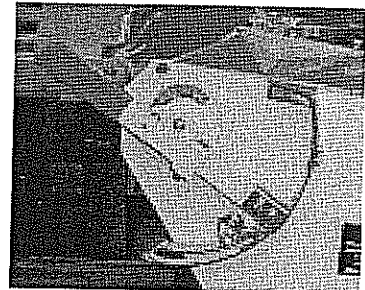


Remove the two stops from their original factory setting



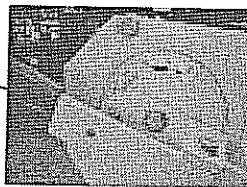
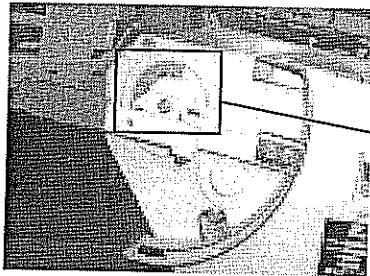
4

Now you will set the second stop. The second stop you set determines the shape of the dough piece.



2

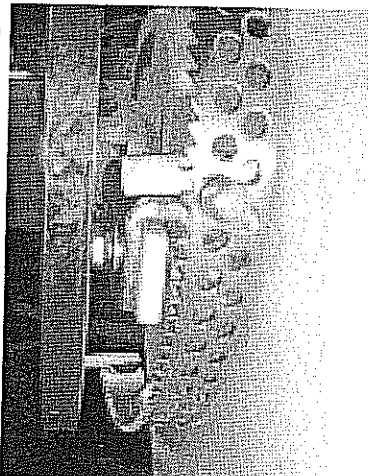
The first stop you set determines the final thickness of the dough.



Using the red ratchet type handle to adjust the roller gap, run a dough piece through the machine, adjusting the rollers each time, until you have achieved your desired final dough thickness. There is a numbered plate for reference during the setting process.

Again, run a piece of dough through the machine taking note of the location of the ratchet handle and the tooth position at which you are starting. It may be helpful to mark the tooth with a washable black marker during this process. You will need to adjust the rollers in between each dough pass to work into the desired dough shape and thickness. This will require several attempts. Do not reuse the same dough piece to achieve the proper results.

3



With the handle locked into place, locate the stop so that it will stop the handle at its current position. Using the 2 screws and washers, secure the stop into its position.

Bottom stop

5



Top stop

Once you have found the desired setting, position the bottom stop so the bottom of the ratchet handle rests on top of the stop. Secure the stop with the 2 screws and washers.

REPLACEMENT PARTS

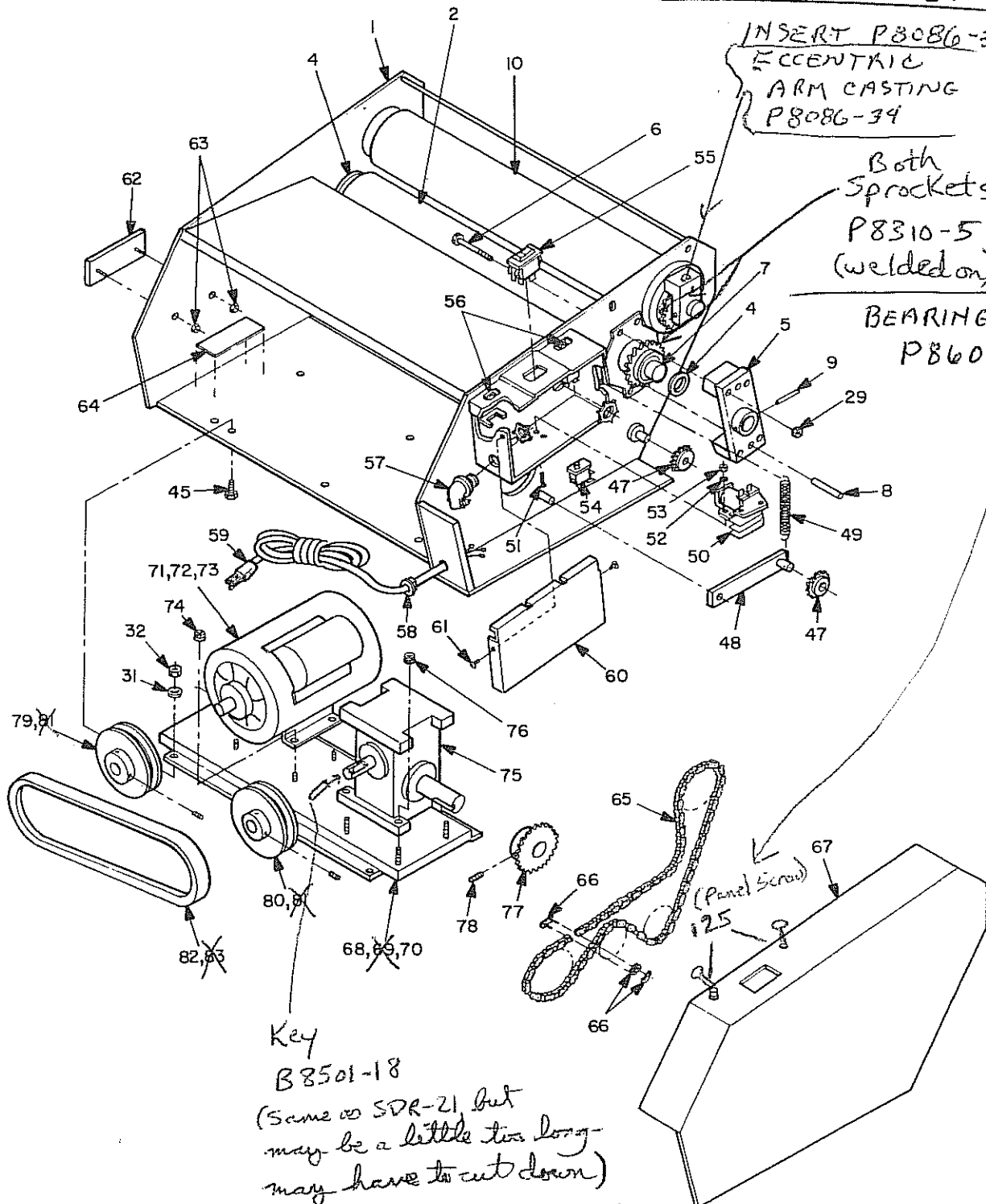
PANEL SCREW ONLY P9301-37

PANEL S. ASSY P9301-85
 - SCREW - SPRING CLIP } 4 PARTS
 - SPRING - SPACER

INSERT P8086-35
 ECCENTRIC
 ARM CASTING
 P8086-34

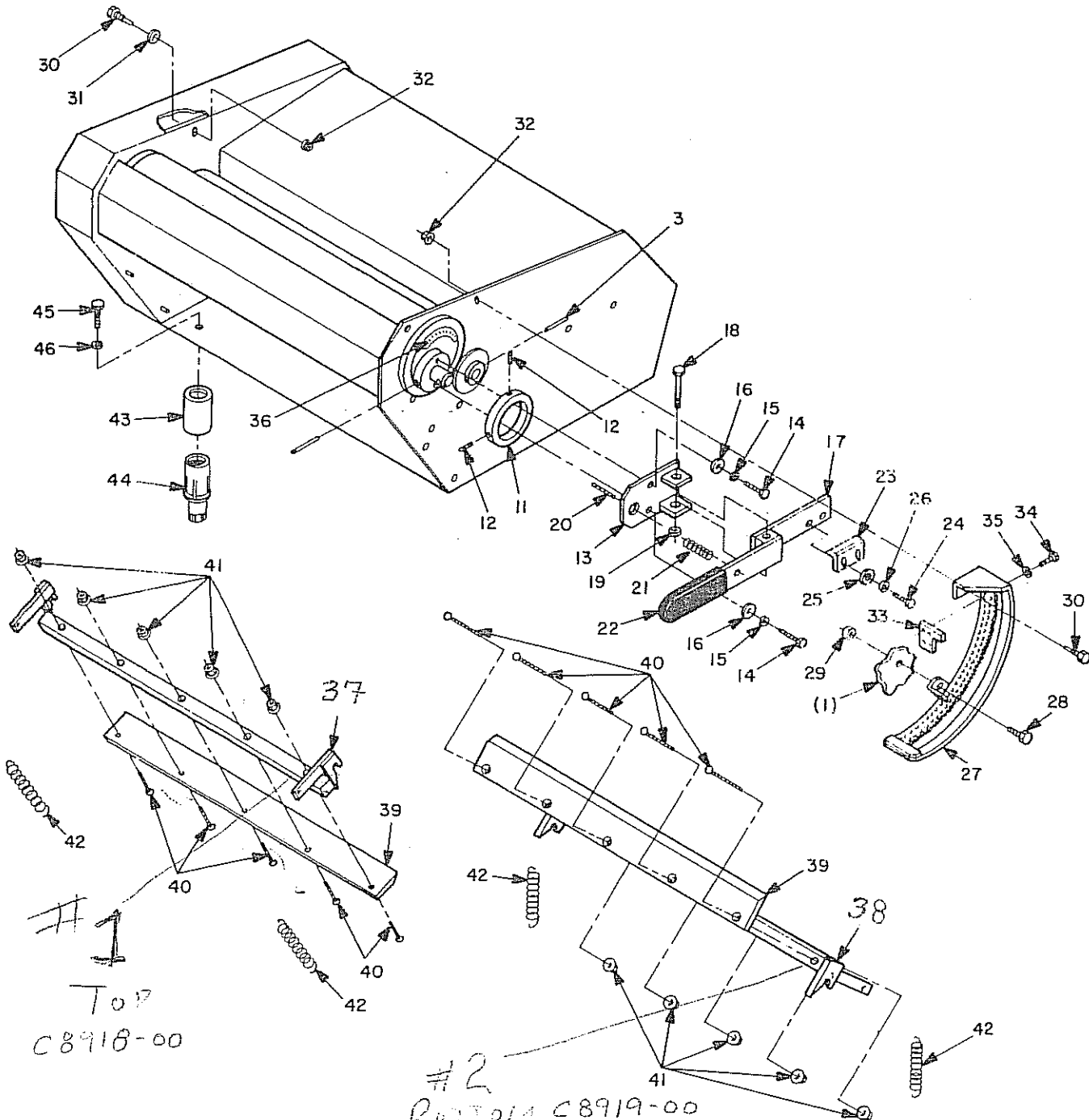
Both
 Sprockets
 P8310-51
 (welded on)

BEARING, ROLLER
 P8605-32



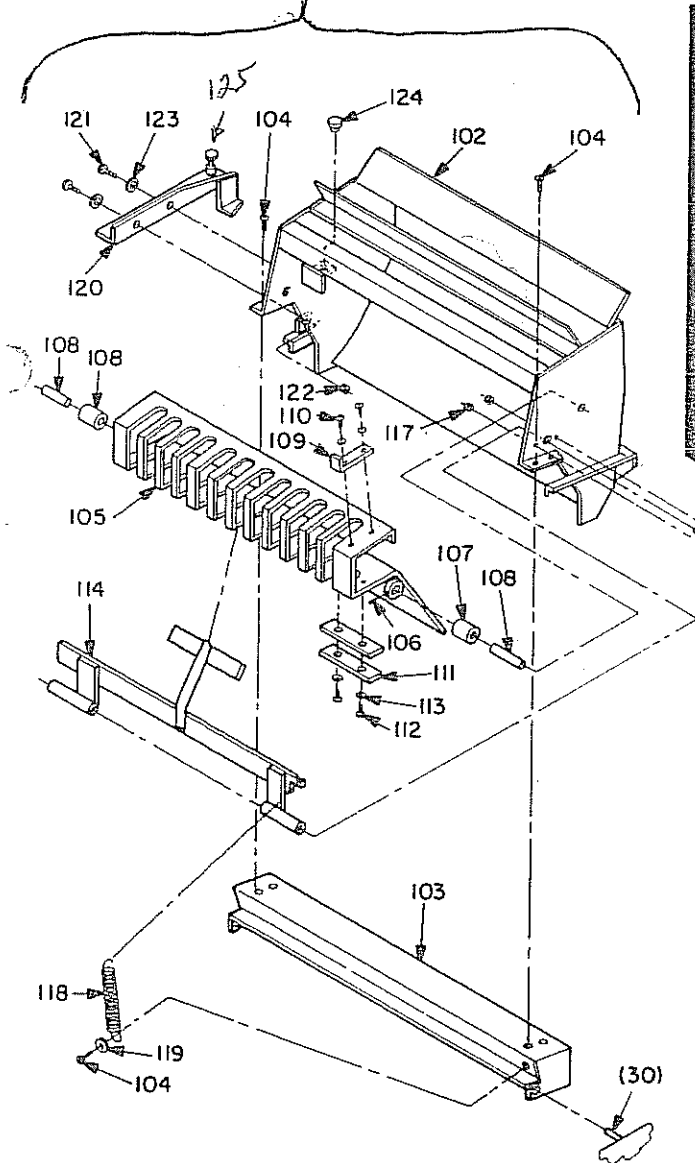
Key
 B8501-18
 (Same as SDR-21, but
 may be a little too long -
 may have to cut down)

REPLACEMENT PARTS

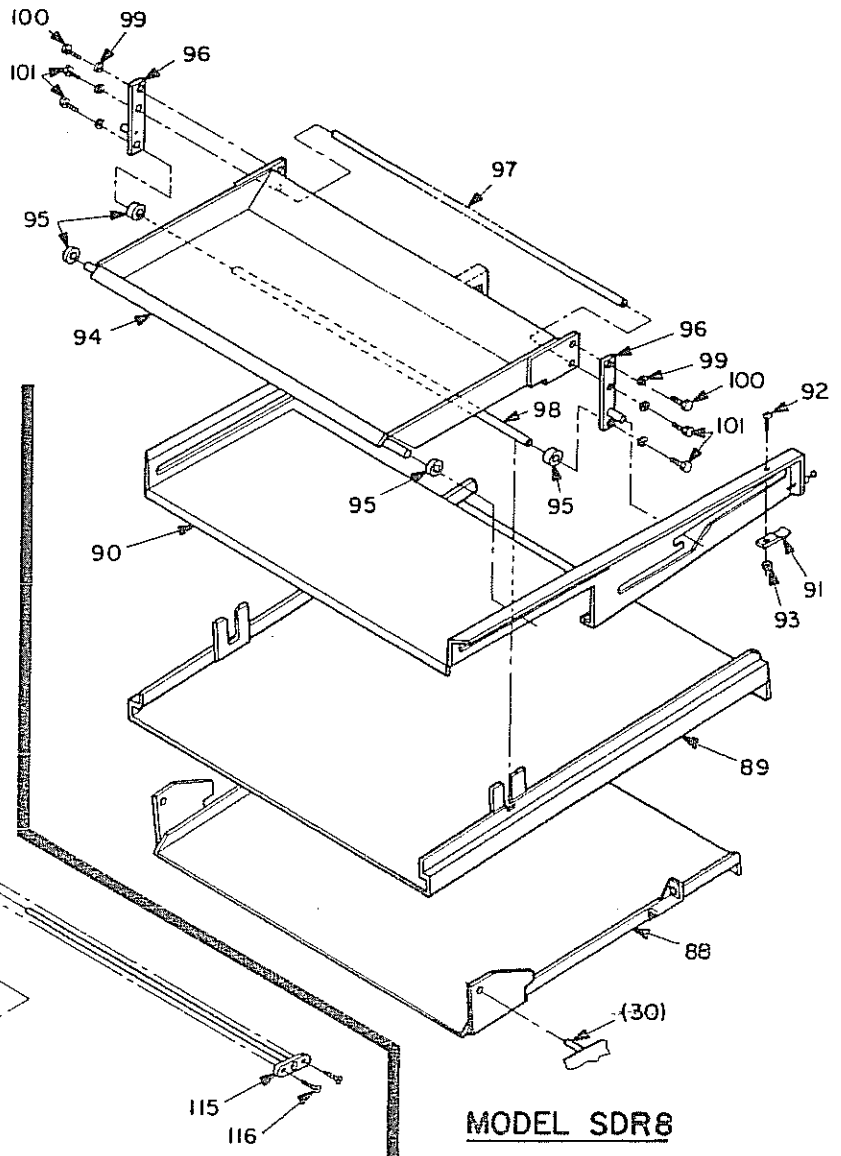


REPLACEMENT PARTS — INFEED SECTION

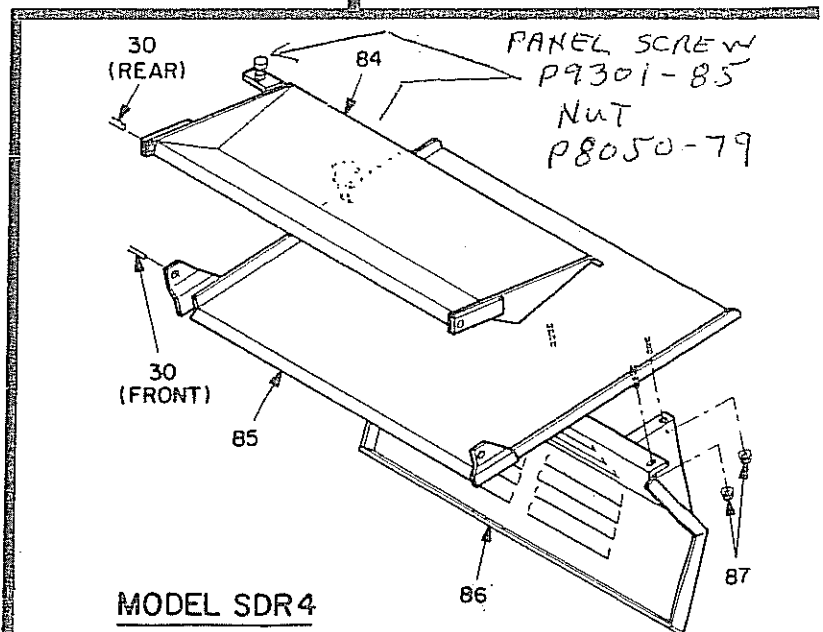
Complete hopper
assy. E4452-00



MODEL SDR4FL



MODEL SDR8



MODEL SDR4

PANEL SCREW
P9301-85
NUT
P8050-79



FOOD PREPARATION SYSTEMS

DOUGH ROLLER

MODELS SDR4, SDR4FL,

REPLACEMENT PARTS

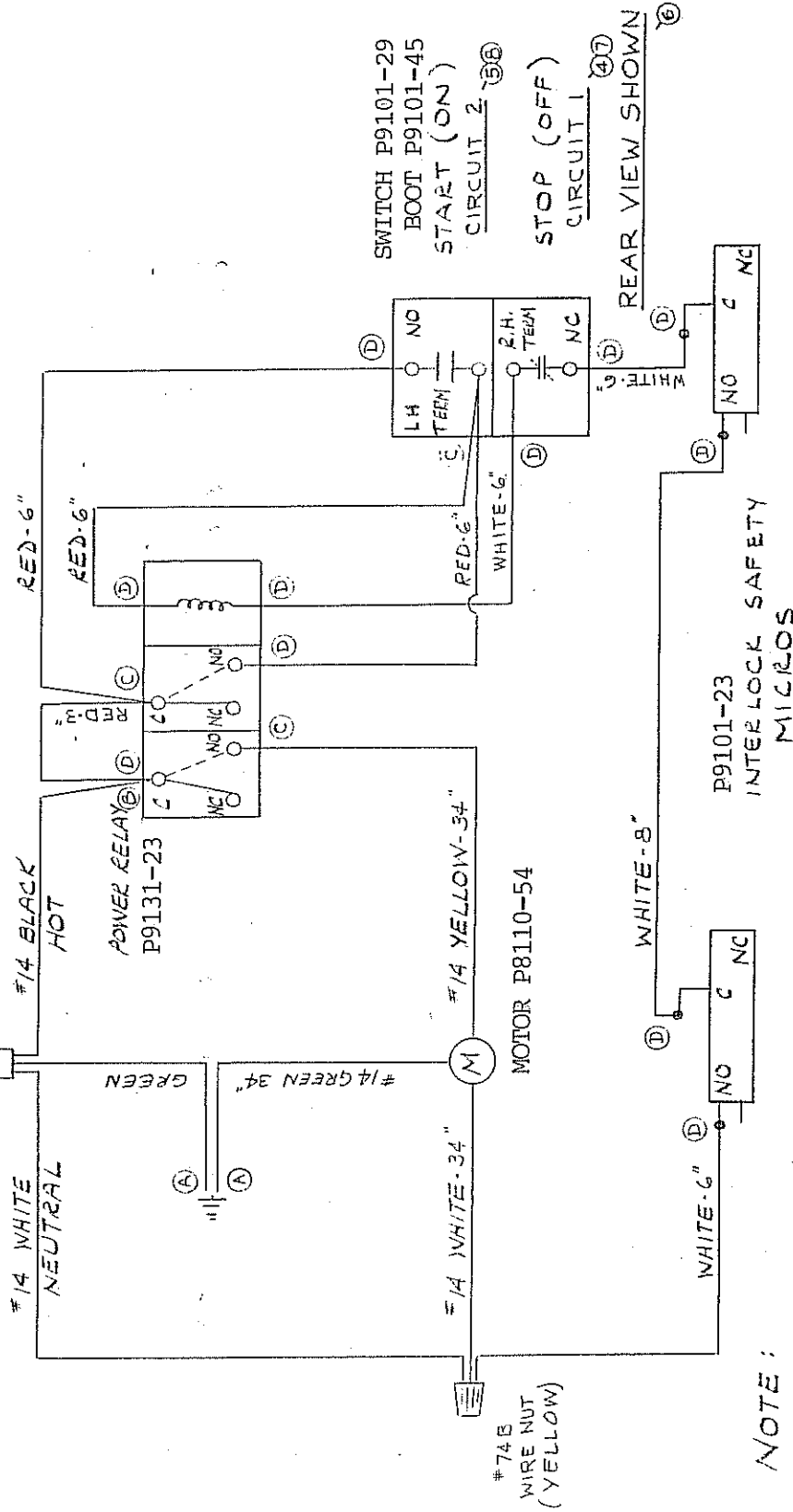
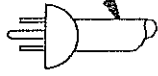
ITEM NO.	DESCRIPTION	PART NO.	ITEM NO.	DESCRIPTION	PART NO.
1.	FRAME S.A.	4427-00	63.	PUSH NUT	P8050-01
2.	STATIONARY ROLLER S.A. (Synthetic) →	P8060-56	64.	SPEC. PLATE	P9201-73
3.	ROLL PIN 3/16 DIA. x 1-5/8 LG	P8610-28	65.	CHAIN #40 x 43-3/4 LG.	P9700-03
4.	THRUST BEARING #TB1228	B11585-00	66.	CHAIN CONNECTOR #40 STRAIGHT	P9700-08
5.	ROLLER BLOCK S.A.	P8025-78	67.	SIDE COVER	E4430-00
6.	SCREW 1/4-20 x 2-1/4 HEX CAP	B11592	68.	DRIVE BASE S.S.A. (SDR4 & 4FL) STD.	D5129-00
7.	SHAFT	P8060-60	69.	DRIVE BASE S.S.A. (SDR8 ONLY)	D5129-02
8.	DOWEL PIN 1/4 DIA. x 2" LG.	P8060-43	70.	DRIVE BASE S.S.A. (SDR4 & 4FL) OPT.	D5129-04
9.	ROLL PIN 3/16 DIA. x 1-1/4 LG.	D5408-00	71.	DISCONTINUED	
10.	ADJUSTABLE ROLLER S.A. (Synthetic) →	B12044-00	72.	MOTOR 3/4 HP (SDR8 ONLY)	P8110-43
11.	COLLAR No longer used	P8045-09	73.	MOTOR 1/2 HP (SDR4 & 4FL)	P8110-54
12.	SET SCREW 1/4-20 x 1/4 LG.	B12069-00	74.	LOCKNUT #31-WLF-51618	P8050-74
13.	HANDLE MOUNT S.A.	P8025-06	75.	REDUCER	P8200-14
14.	SCREW 1/4-20 x 3/4 HEX CAP	P8055-03	76.	LOCKNUT #31-WLF-3816	P8050-78
15.	L.W. 1/4 MED SPLIT	P8055-06	77.	SPROCKET 1 1/2 P.D. →	P8310-29
16.	WASHER 1/4 PLAIN	C8951-00	78.	SET SCREW 1/4-20 x 5/16 SOCK. H.D.	P8045-15
17.	HANDLE S.A.	P8025-42	79.	MOTOR PULLEY (SDR4 & 4FL ONLY)	P8500-33
18.	SCREW 1/4-20 x 1-3/4 HEX CAP	P8050-59	80.	REDUCER PULLEY (SDR4 & 4FL ONLY)	P8500-33
19.	STOP NUT 1/4-20	B12075-00	81.	PULLEY (SDR8 ONLY)	P8500-11
20.	SCREW	P9500-19	82.	"V" BELT (SDR4 & 4FL ONLY)	P8700-03
21.	SPRING	P9312-10	83.	"V" BELT (SDR8 ONLY)	P8700-06
22.	HANDLE GRIP	B8402-01	84.	FLOUR PAN S.A. (SDR4 ONLY)	D5126-00
23.	PAWL	P8025-03	85.	INFEED PAN S.A. (SDR4 & 4FL ONLY)	D5127-00
24.	SCREW 1/4-20 x 1/2 HEX CAP	P8055-06	86.	MOTOR COVER S.A.	D5125-00
25.	WASHER 1/4 PLAIN	P8055-03	87.	LOCKNUT #31-WLF-1024	P8050-71
26.	L.W. 1/4 MED. SPLIT	C8952-00	88.	INFEED PAN S.A. (SDR8 ONLY)	E4434-00
27.	INDEX PLATE S.A.	P8025-03	89.	DOUGH SLIDE S.A. (SDR8 ONLY)	E4433-00
28.	SCREW 1/4-20 x 1/2 HEX CAP	P8050-76	90.	GUARD S.A. (SDR8 ONLY)	E4432-00
29.	LOCKNUT #31-WLF-1420	P8055-16	91.	SPRING (SDR8 ONLY)	B12078-00
30.	PIVOT	P8050-78	92.	SCREW #10-24 x 3/8 TRIM HEX M.S.	P8020-50
31.	WASHER 3/8 PLAIN	B12072-00	93.	LOCKNUT #31-WLF-1024	P8050-71
32.	LOCKNUT #31-WLF-3816	P8025-34	94.	FLOUR PAN S.A. (SDR8 ONLY)	C8785-01
33.	HANDLE STOP	P8055-03	95.	COLLAR 3/8 COMM	P8065-08
34.	SCREW 1/4-20 x 3/8 RD. M.S.	P9201-48	96.	GUIDE ARM S.A. (SDR8 ONLY)	B12050-00
35.	L.W. 1/4 MED. SPLIT	C8918-00	97.	THE BAR (SDR8 ONLY)	B11826-04
36.	ECCENTRIC DECAL	C8919-00	98.	THE BAR (SDR8 ONLY)	B11826-03
37.	SCRAPER BAR S.A. #1 Top	P9313-48	99.	L.W. #10 MED SPLIT	P8055-04
38.	SCRAPER BAR S.A. #2 Bottom	P9301-38	100.	SCREW #10-24 x 1/2 TRIM HEX M.S. S.S.	P8020-82
39.	SCRAPER S.A. #1 & #2	P8050-76	101.	SCREW #10-24 x 3/4 TRIM HEX M.S. S.S.	P8020-25
40.	THRED STUD 1/4-20	P9500-50	102.	HOPPER S.S.A.	E4453-00
41.	LOCKNUT 31-WLF-1420	B11595-00	103.	HAND GUARD	D5138-00
42.	SPRING	P9300-13	104.	SCREW #10-24 x 3/8 TYPE 1 PAN TAP S	P8020-34
43.	LEG S.A.	P8035-10	105.	DOUGH FLAP S.S.A.	E4446-00
44.	LEG INSERT	P8055-10	106.	SCREW #10-32 x 3/16 HEX SOCK SET	P8045-36
45.	SCREW 3/8-16 x 1 HEX CAP	B12034-00	107.	SPACER	B11638-00
46.	L.W. 3/8 MED. SPLIT	B12033-00	108.	SHAFT	B11637-00
47.	SPROCKET S.A. →	P9500-20	109.	STOP	B12083-00
48.	IDLER ARM S.A.	P9131-23	110.	SCREW #8-32 x 1/4 TYPE 1 PAN TAP S	P8015-11
49.	SPRING	P8015-03	111.	WEIGHT	B11682-00
50.	RELAY	P8055-32	112.	SCREW #10-24 x 1/2 TRIM HEX TAP S	P8020-11
51.	SCREW #8-32 x 3/8 RD. M.S.	P8050-13	113.	L.W. #10 INTERNAL TOOTH	P8050-17
52.	L.W. #8 INTERNAL	P9101-23	114.	PUSHER S.S.A.	C8960-00
53.	NUT #8-32	P9101-29	115.	PIVOT ROD S.S.A.	B12087-00
54.	MICROSWITCH	P8050-79	116.	SCREW #10-24 x 3/8 TRIM HEX M.S.	P8020-04
55.	SWITCH	P9110-17	117.	LOCKNUT #31-WLF-1024	P8050-71
56.	SPEED GRIP NUT	P9110-43	118.	SPRING	P9500-50
57.	45° CONNECTOR	P9120-38	119.	WASHER #10 PLAIN S.S.	P8055-05
58.	STRAIN RELIEF BUSHING	C8929-00	120.	LOCK DOWN ANGLE S.S.A.	B12092-00
59.	CORDSET	P8020-32	121.	SCREW 1/4-20 x 5/8 HEX CAP	P8025-13
60.	WIRING BOX COVER	P9200-95	122.	LOCKNUT #31-WLF-1420	P8050-76
61.	SCREW #10-24 x 3/8 RD. TAP S		123.	WASHER 1/4" PLAIN	P8055-06
62.	NAME PLATE		124.	GROMMET	P9600-41
Panel Screw assy.		P9301-85	* Hi-speed sprocket		P8310-29

IMPORTANT: WHEN ORDERING REPLACEMENT PARTS...PLEASE SUPPLY MODEL AND SERIAL NUMBER...ELECTRICAL REQUIREMENTS...TYPE OF GAS...ITEM NUMBER...DESCRIPTION AND PART NUMBER...PART ORDERS THAT ARE SHIPPED DUE TO LACK OF ABOVE INFORMATION ARE SUBJECT TO RESTOCKING CHARGE. NO MERCHANDISE CAN BE RETURNED WITHOUT WRITTEN PERMISSION.

CANEID

120 V 1 PHASE
60 HZ POWER SOURCE

#14-3 STO CORDSET



NOTE:

1. ALL WIRES ARE #13 AWG, TYPE ANW, 1/32 INS. THICKNESS, 105°C, EXCEPT AS NOTED.

TERMINALS

A	P9125-15 T1B RB14-10	BULK RB873	BLUE (RING)
B	P9125-10 NTM KD-N-VI-14	PIGGYBACK	BLUE (INSULATED)
C	P9125-22 T1B RB14-250F	BULK RB250	BLUE
D	P9125-32 T1B RA18250F	BULK RA250	RED

NO.	WAS	DATE	B
1	REVISED	12-23	ME
2	NOT SHOWN	1-23	W
3	SEE ENG. FILE	1-23	LG
4	1	4/27/64	K5
5	2	4/27/64	K5
6	ADDED	4/27/64	K5
7	CIRCUIT 2	4/67	M
8	CIRCUIT 1	4/67	MC

REVISIONS

TOLERANCES NOT NOTED
FRAC. ±.015" DEC. ±.003"
ANGULAR ±.0°-2°
SHEET METAL ±.1/64"

FOR
SDR 4.1.8 DOWN
ROLLER

DESCRIPTION
WIRING
DIAGRAM

ANETSBERGER BROS., INC
NORTHBROOK, ILLINOIS

SCALE NONE
DATE 7-22-55
DRAWN BY MEH
CHKD. BY

FINISH

MATERIAL

